

Black Hills 100 Crew Driving Directions



Woodle Field to Alkali Creek TH (1st Aid Station) Driving Distance - 5 miles

- From Woodle Field, return to Lazelle Street. Go right, and proceed to the first stop light at the intersection of Lazelle St. and Junction Ave. Go left, and proceed south 2 miles on Junction Ave to Interstate 90, exit 32. Take a left and head East on I-90 two miles to exit 34 (Black Hills National Cemetery). Take the off ramp at exit 34, go left, and proceed under the I-90 overpass. Straight ahead you will see the following sign. Take a left and follow the BLM RD 1/2 mile to the Alkali Creek TH/ Aid Station.



Alkali Creek TH to Elk Creek TH (2nd Aid Station) Driving Distance - 12.3 miles

- From Alkali Creek, return to I-90 exit 34. Go right, and head west 2 miles on I-90 to exit 32. Take the off ramp at exit 32. On your right you will see the following sign for Vanocker Canyon.



- Merge into the left lane, and take a left at the stop sign. Drive under I-90, and proceed south on Vanocker Canyon Rd 6.9 miles to the turnoff for the Elk Creek TH. You will see the following Centennial Trail Trailhead sign for Elk Cr. on your right and Runkle RD on your left.



Take a left on Runkle RD, and proceed 2.4 miles to the Elk Creek TH.

Elk Creek TH to Dalton Lake TH (3rd Aid Station)
Driving Distance - 12.9 miles

- From Elk Creek, return to Vanocker Canyon Rd. Take a left on Vanocker, and proceed 6.5 miles to the turnoff for the Dalton Lake TH. You will see the following Centennial Trail Trailhead sign on your right and Dalton Lake RD sign on your left.



Take a left on Dalton Lake RD, and proceed 4 miles to the Dalton Lake TH/ Campground.

Dalton Lake TH to Nemo (4th Aid Station)
Driving Distance - 8.7 miles

- From Dalton Lake, return to Vanocker Canyon Rd. Take a left on Vanocker Canyon Rd., and proceed 3.5 miles to the intersection of Nemo Rd. and Vanocker Rd. At the stop sign, go left on Nemo Rd. and proceed 1/2 mile to town of Nemo. The Nemo aid station is located in front of the Nemo Guest Ranch.



Nemo to Pilots Knob TH (5th Aid Station)
Driving Distance - 6.8 miles

- From Nemo Guest Ranch, return to Nemo Rd. Take a right on Nemo Rd., and proceed 1.7 miles to Merritt Estes Rd (County Rd 208). You will see the following Highway 385 sign on your right and Merritt Estes RD on your left.



Take a right on Merritt Estes Rd (County Rd 208) and proceed 4.4 miles to Pilot Knob TH.

Pilot Knob TH to Silver City VFD (6th Aid Station)

Driving Distance - 8 miles

- From Pilot Knob TH, take a right on Merritt Estes Rd., and proceed 1 mile to the intersection of Highway 385. You will see the following business straight ahead.

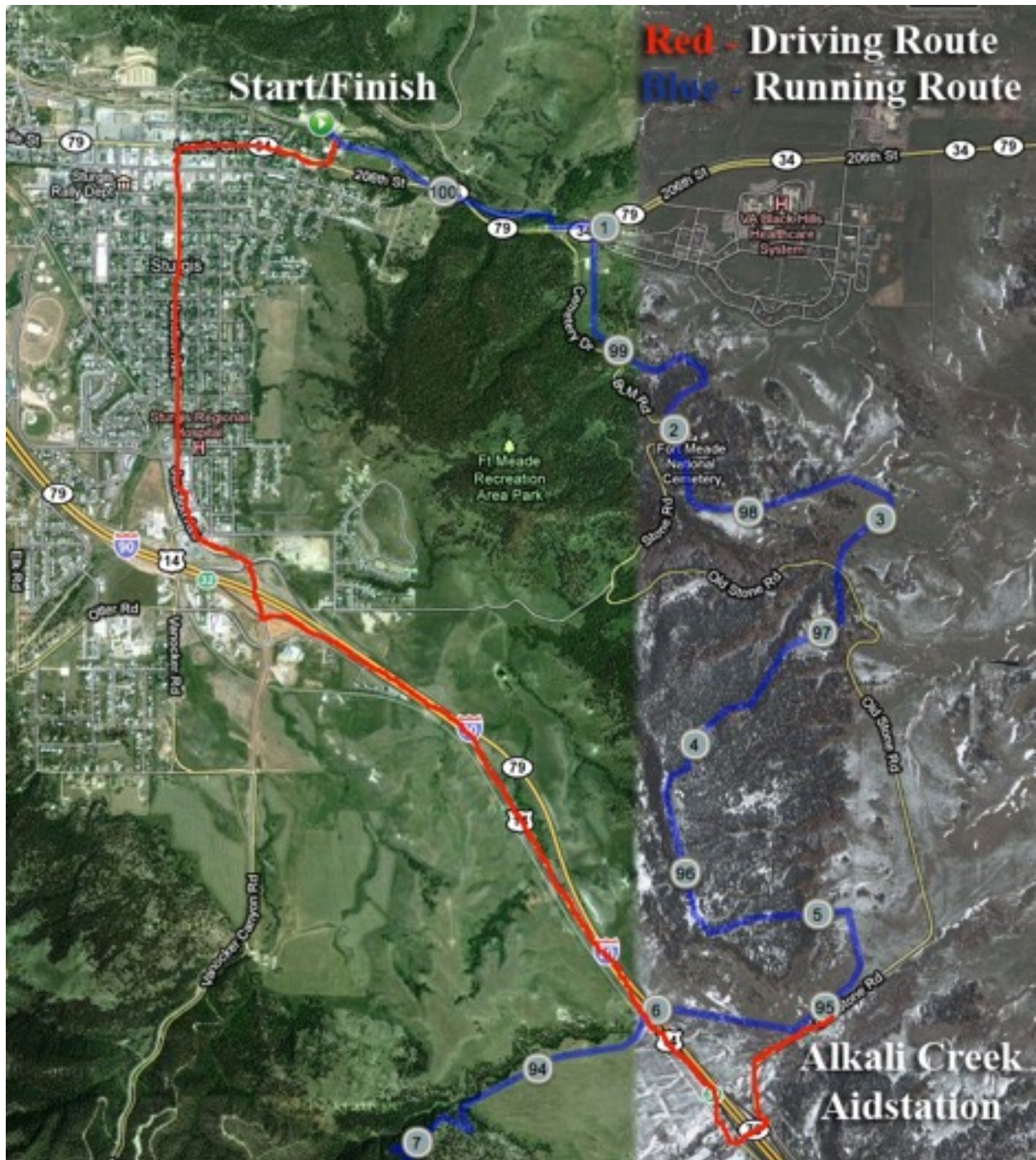


- Take a left on Highway 385 and proceed 2.8 miles. Be on the lookout for the Silver City Road and signs for the Deer Creek TH on your right. The Whispering Pines campground is located at the intersection of Hwy. 385 and Silver City Rd.

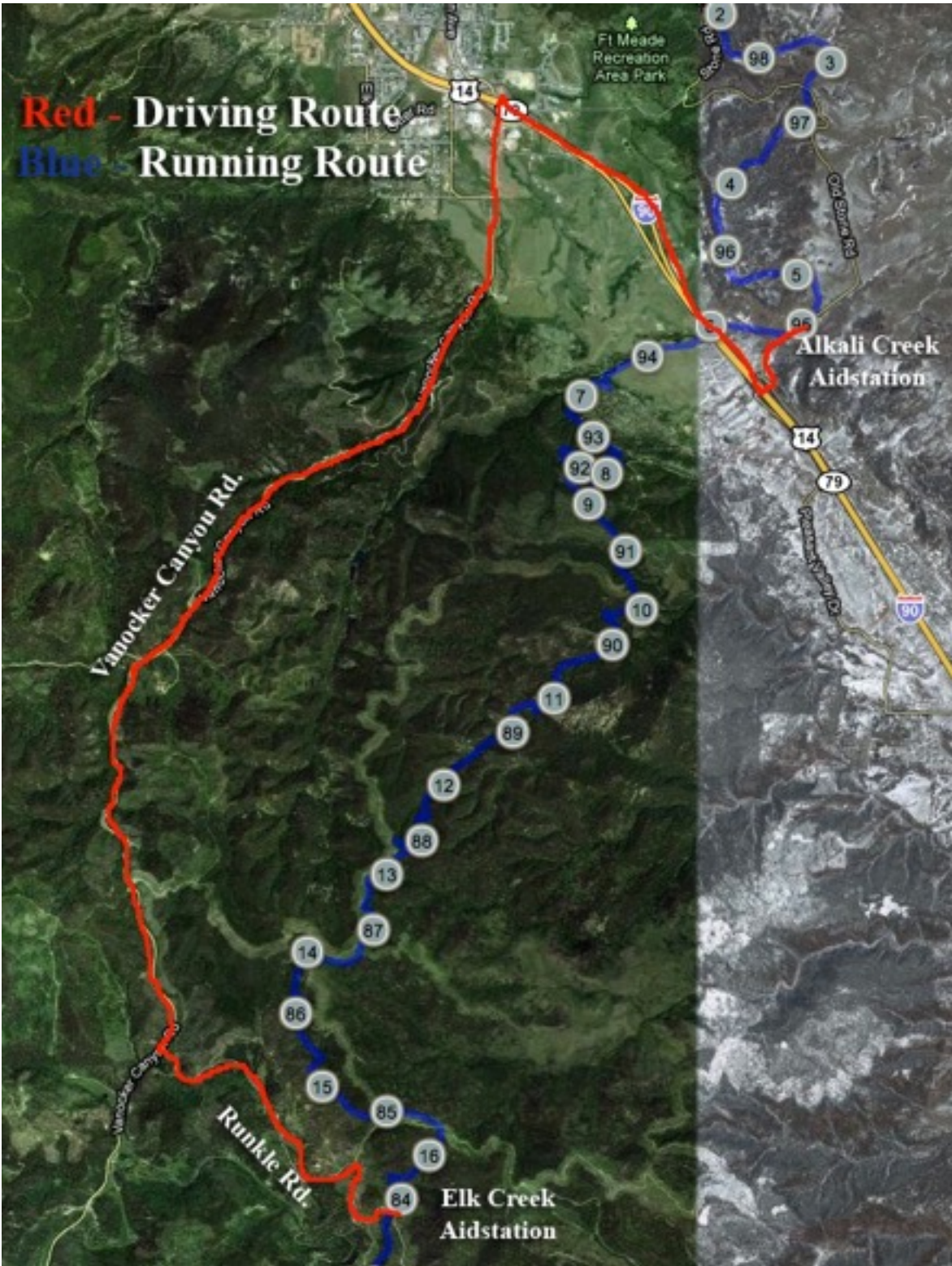


- Take a right on Silver City Rd. and follow it 4.5 miles until you reach Silver City. The Silver City Community Hall is on the right had side, just before you get to the town.

Start to Alkali Creek



Alkali Creek to Elk Creek



Elk Creek to Dalton Lake



Dalton Lake to Box Elder Creek



Box Elder Creek to Pilots Knob

